



TRACER STUDY IMPLEMENTATION AT DIAN NUSWANTORO UNIVERSITY - 2015

KUSNI INGSIH, DEWI AGUSTINI SANTOSO
UDINUS CAREER CENTER
career@cc.dinus.ac.id

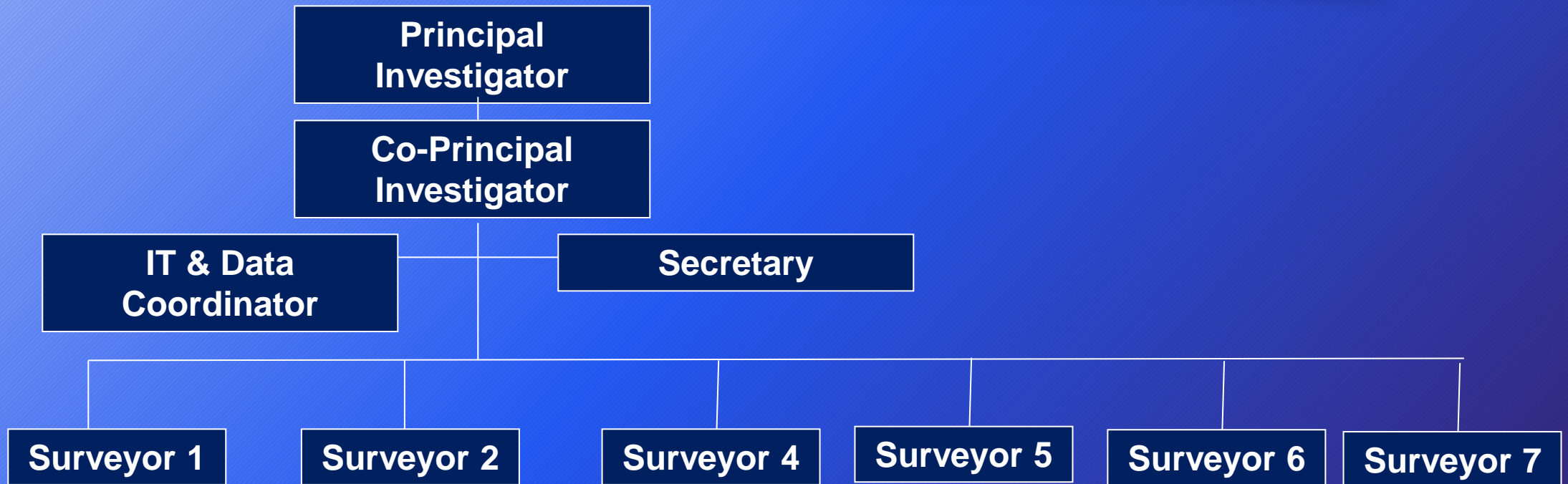
DIAN NUSWANTORO UNIVERSITY

- established since 1990
- Consists of 5 faculties and 17 study program
- Nakula street I / 5-11th
Semarang
Central Java - Indonesia

TRACER STUDY

- Tracer study was done in each study program
- Not continuously
- Instruments just for accreditation
- In 2015, for the first time conduct by Career Center

ORGANIZATION STRUCTURE



TARGET POPULATION - GRADUATES IN 2013

DIPLOMA

- Information Management - 63 people
- Technical Information - 87 people
- Broadcasting - 59 people
- Medical Records and Health Information - 88 people

BACHELOR

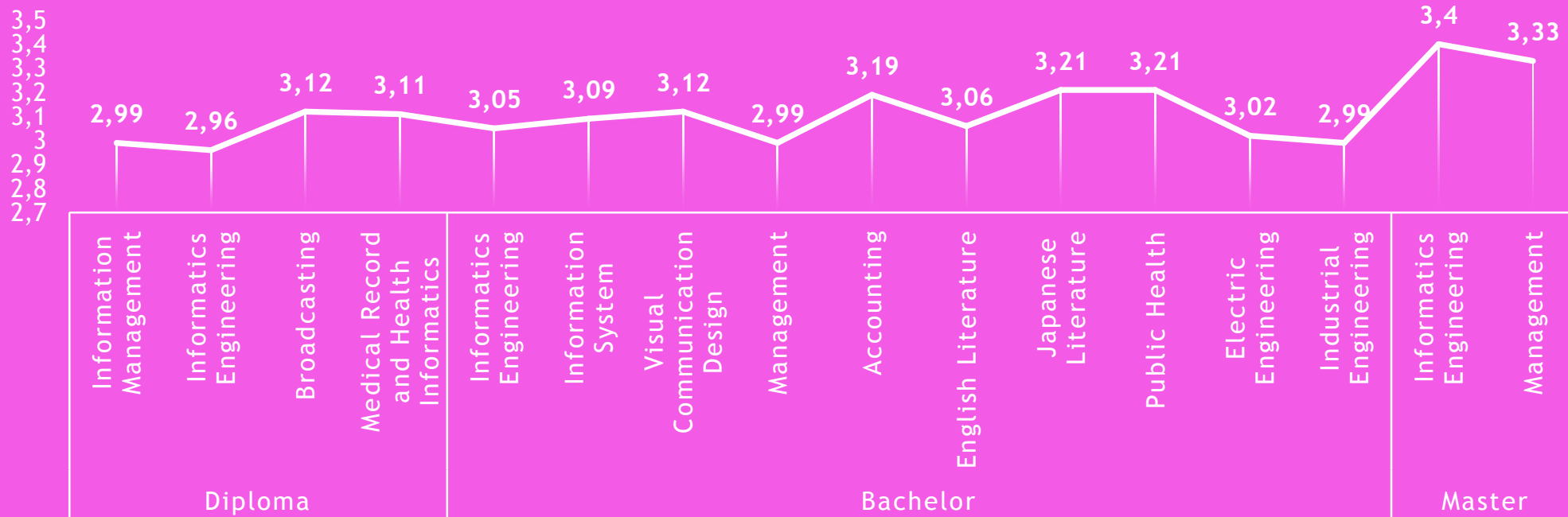
- Informatics Engineering - 591 people
- System Information - 232 people
- Visual Communication Design - 82 people
- Management - 96 people
- Accounting - 113 people
- English - 63 people
- Japanese - 27 people
- Public Health - 96 people
- Electrical Engineering - 24 people
- Industrial Engineering - 16 people

MAGISTER

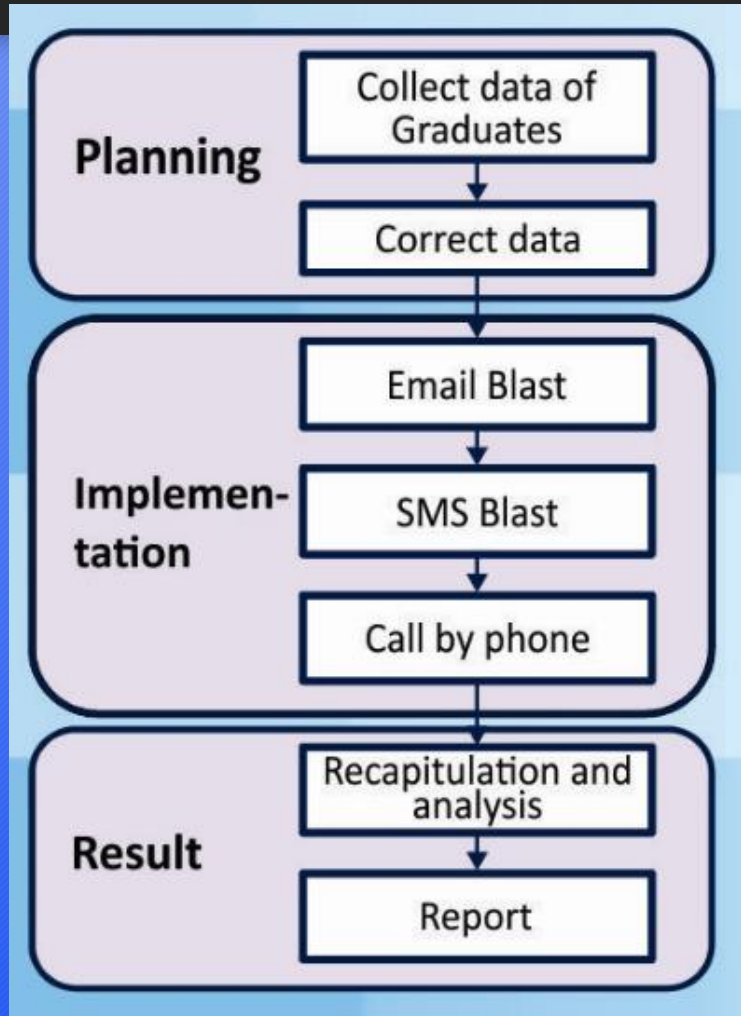
- Technical Information - 158 people
- Management - 69 people

Total 1864 people

GPA OF GRADUATES IN 2013



TRACER STUDY METHODOLOGY



PLANNING

- Collect data Graduates
 - before Graduation from Data and Information Center
 - from Study Program
- Comparison data
- Update data Graduates

IMPLEMENTATION

- Create online questionnaire in Indonesian
- Create formal letter from Rector
- Email blast
- Check data questionnaire
- SMS blast and publication to social media
- Check data questionnaire
- Call by phone - hire 7 students to be surveyors
- Check data questionnaire



Tracer Study Udinus

Dikti saat ini sedang melaksanakan upaya untuk merintis kompilasi data tracer study nasional khususnya mengenai transisi dan posisi pekerjaan lulusan PT di Indonesia. Untuk itu sejak tahun 2011, telah dikembangkan suatu sistem online yang dapat digunakan oleh Perguruan Tinggi untuk melacak aktivitas para lulusannya setelah masa pendidikan tinggi, baik masa transisi maupun pergerakan mereka di dunia kerja sampai.

Tujuan

Tracer study dinilai penting karena menjadi alat evaluasi kinerja PT dan sekarang telah dijadikan salah satu syarat kelengkapan akreditasi oleh Badan Akreditasi Nasional Perguruan Tinggi (BAN-PT). Tracer study online Dikti ditujukan untuk melacak jejak lulusan/alumni yang dilakukan 2 tahun setelah lulus dan bertujuan untuk mengetahui:

- Outcome pendidikan dalam bentuk transisi dari dunia pendidikan tinggi ke dunia kerja (termasuk masa tunggu kerja dan proses pencarian kerja pertama), situasi kerja terakhir, dan aplikasi kompetensi di dunia kerja.
- Output pendidikan yaitu penilaian diri terhadap penguasaan dan pemerolehan kompetensi.
- Proses pendidikan berupa evaluasi proses pembelajaran dan kontribusi pendidikan tinggi terhadap pemerolehan kompetensi.

Hasil tracer study yang kemudian dilaporkan ke Dikti akan membantu program Pemerintah dalam rangka memetakan kebutuhan dunia kerja dengan pembangunan pendidikan di Indonesia

Nomor Kontak Resmi Tracer Studi

- 081-575-251-264
- 089-507-708-019
- 087-832-181-780
- 081-328-808-922
- 085-740-125-451
- 089-804-757-888

Pastikan hanya nomor-nomor berikut yang menghubungi anda/anda hubungi.



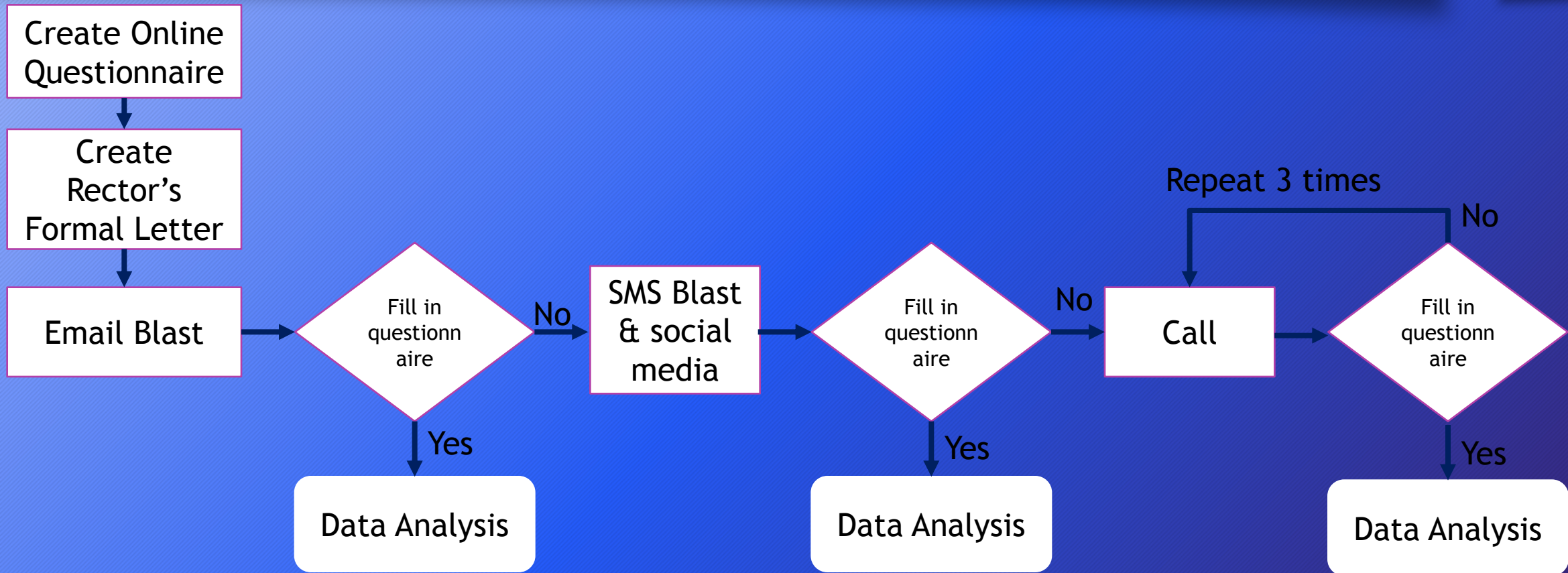
Contacts

Address: Gedung B Lantai 1, Jalan Nakula I No 5 - 11 Semarang
Phone: (024) 3520165, 088806400646
BB: 32623D18
Email: alumni@cc.dinus.ac.id

Stay Connected

facebook
twitter

FLOW OF PROCESS

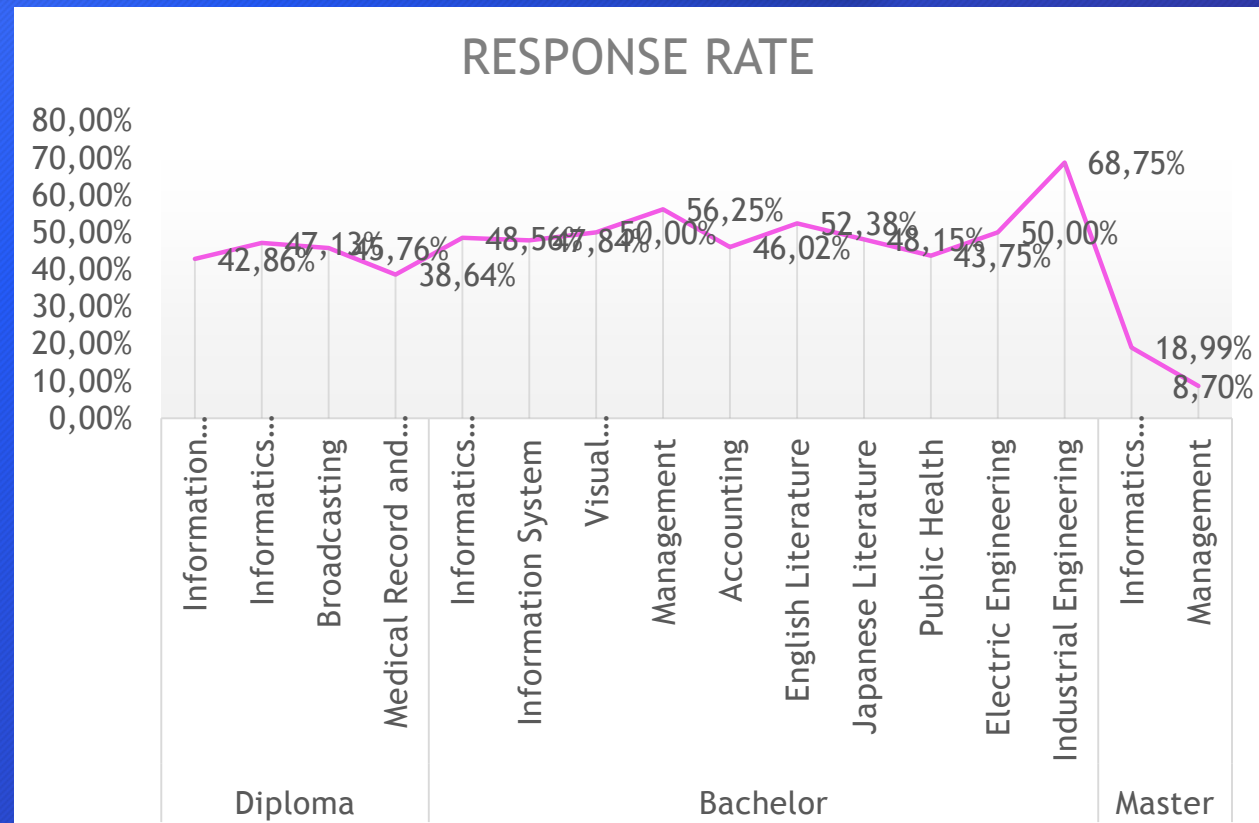


RESULT

- Total population: Graduates in 2013 -> 1864 people
- Undelivered Email n=164 (8,8% of population)
- Can't be contacted n=500 (26,82% of population)
- Subject Target n=1364
- Respondents n= 821
- Gross Response Rate 44.05%
- Nett Response Rate 60.19%

RESPONDENTS

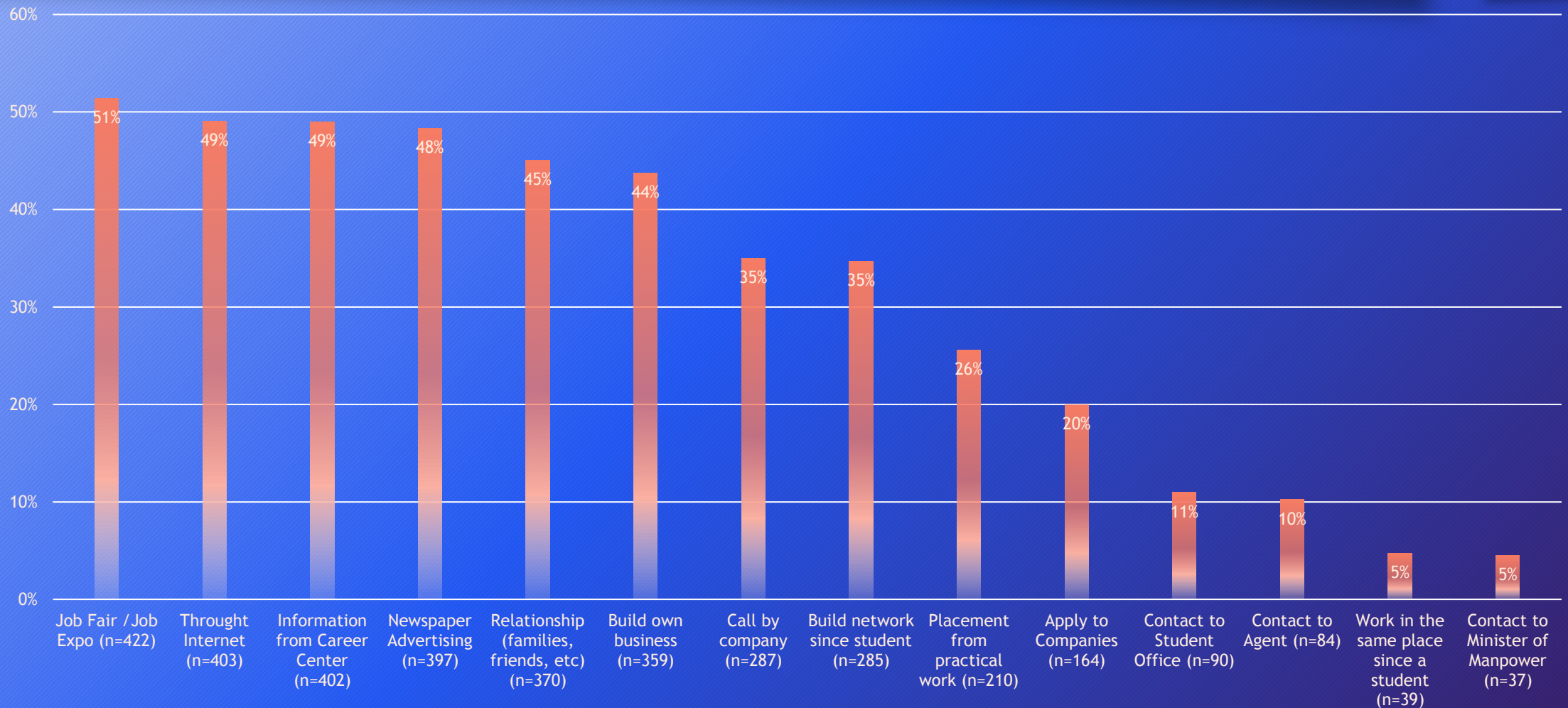
	Study Program	Graduates	Respondents	Respon Rate	
Diploma	Information Management	63	27	42.86%	
	Informatics Engineering	87	41	47.13%	
	Broadcasting	59	27	45.76%	
	Medical Record and Health Informatics	88	34	38.64%	
Bachelor	Informatics Engineering	591	287	48.56%	
	Information System	232	111	47.84%	
	Visual Communication Design	82	41	50.00%	
	Management	96	54	56.25%	
	Accounting	113	52	46.02%	
	English Literature	63	33	52.38%	
	Japanese Literature	27	13	48.15%	
	Public Health	96	42	43.75%	
	Electric Engineering	24	12	50.00%	
	Industrial Engineering	16	11	68.75%	
	Master	Informatics Engineering	158	30	18.99%
		Management	69	6	8.70%
		Total	1,864	821	



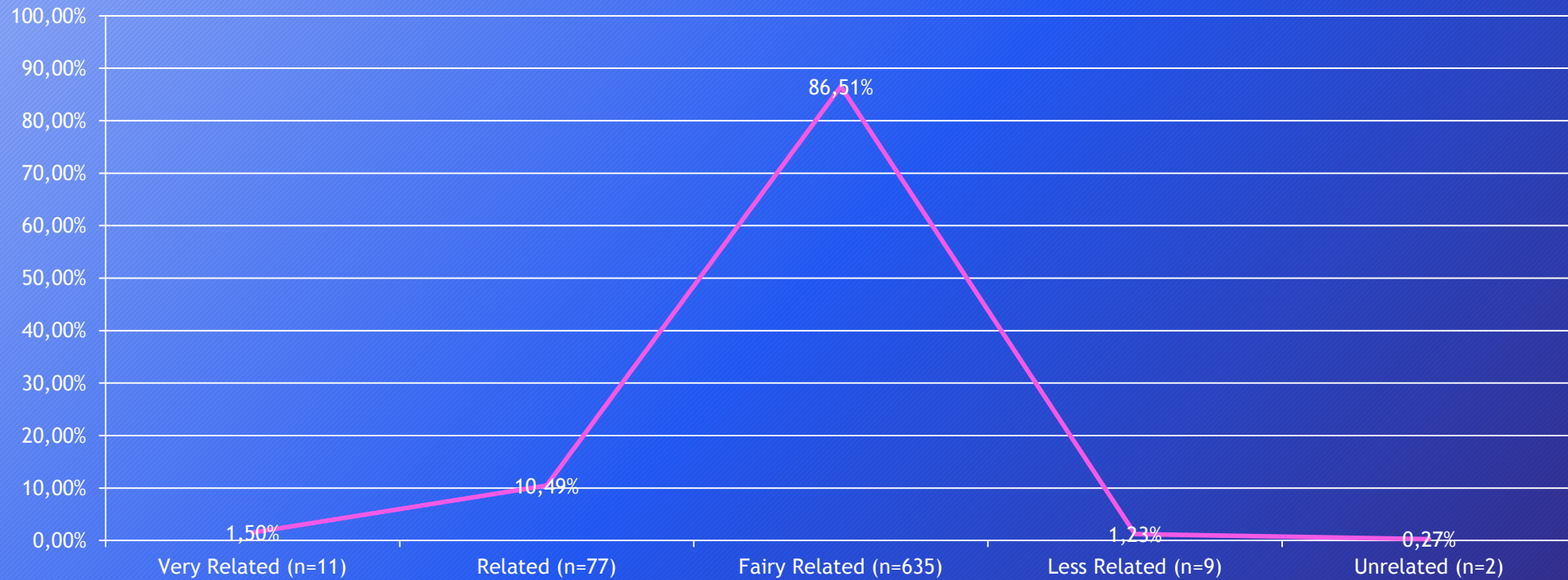
HUNTING JOB

- Before passing exams n=422 (51% of population)
 - 1.919 months before passing exams
- After passing exams n=399 (49% of population)
 - 2.25 months after passing exams

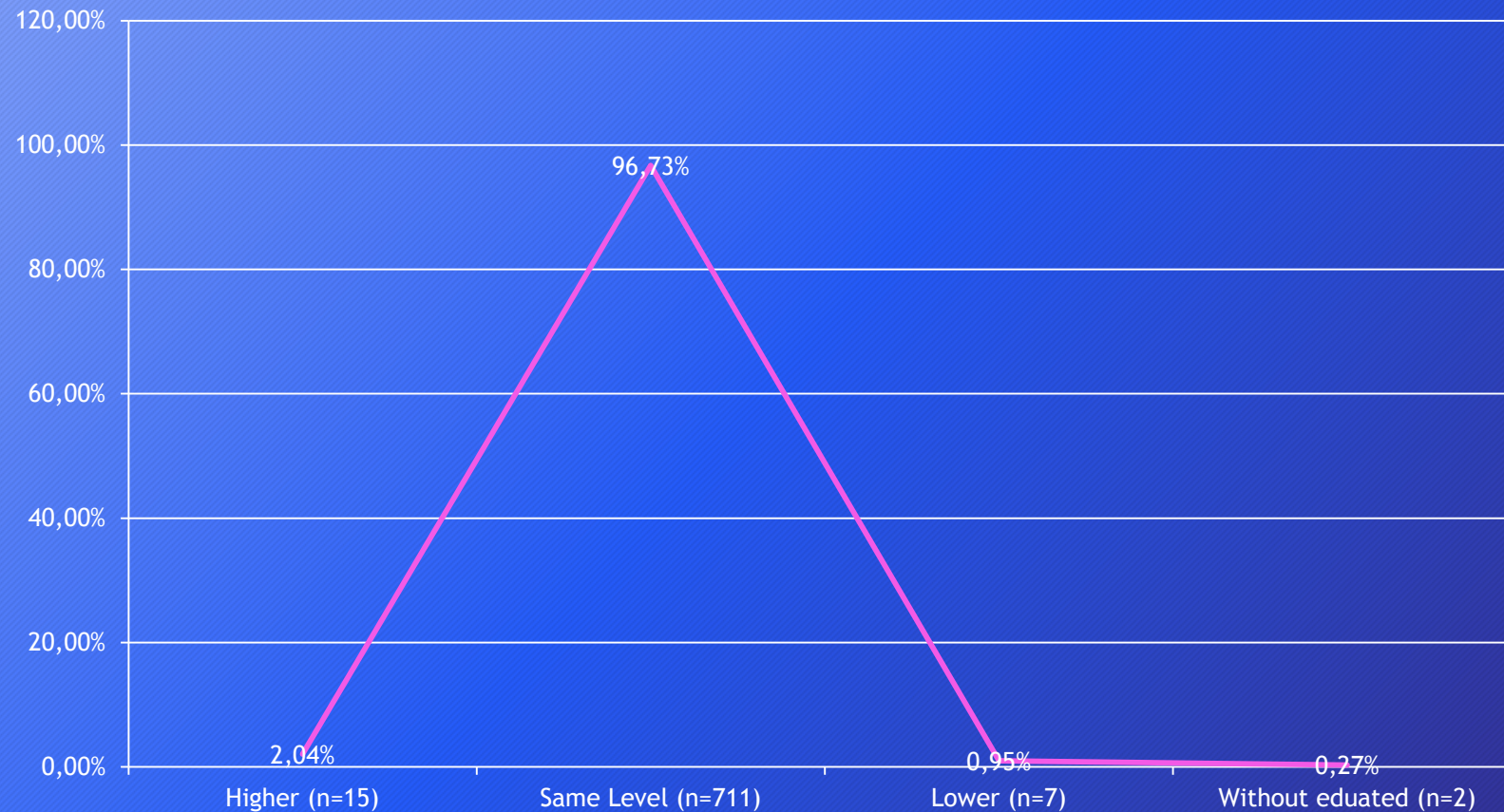
HOW TO FIND A WORK



RELATIONSHIP OF STUDY - WORK (HORIZONTAL MATCH)

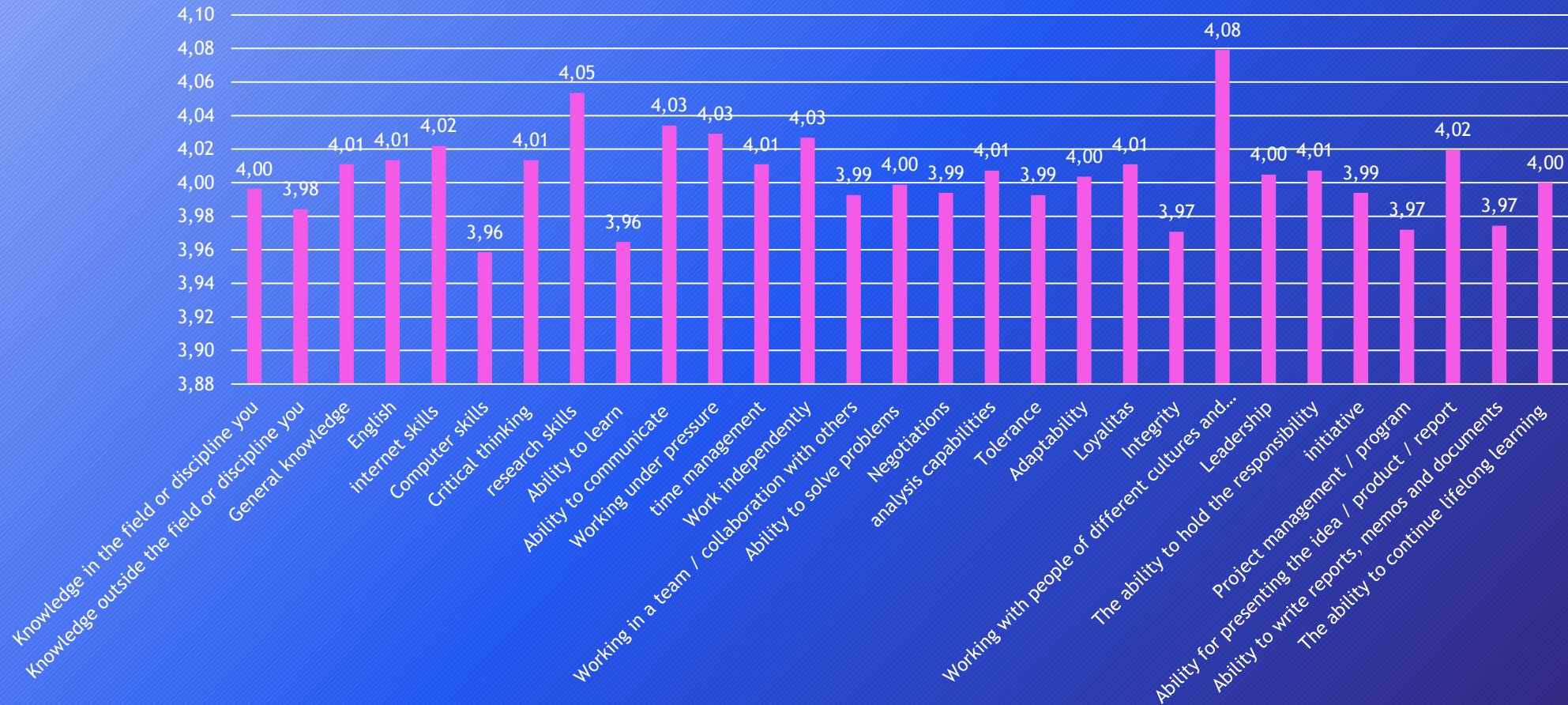


LEVEL EDUCATION NEEDED FOR THE WORK (VERTICAL MATCH)



COMPETENCY OF GRADUATES

GRADUATE'S COMPETENCY



UNIVERSITY CONTRIBUTED



CONCLUSION

- Gross Response Rate 44.05% from 1864 people
- Higher GPA in Diploma 3.12 from Broadcasting Study Program
- Higher GPA in Bachelor 3.12 from Japanese Literature Study Program and Public Health Study Program
- Higher GPA in Master 3.4 from Informatics Engineering Study Program
- The majority of respondents said that they are already working
- Horizontal match showed quite closely
- Vertical match showed same level
- Sensitive information very difficult to obtain, especially salaries, the majority of respondents did not want to inform.